



What is QuESH?

We are a professional consulting company with local and international accredited consultants. We have specialist consultants that provide services for all aspects of work pertaining to Quality, Environmental, Safety and Health (QuESH).

Why Do You Need QuESH?



Accreditations of Our Consultants

- IEMA (UK) Registered Environmental Auditors
- IEMA (UK) Registered Lead EMS Auditor
- IRCA Registered Lead Auditor for ISO 9001:2008/ OHSAS 18001:2008
- MOM Registered Workplace Safety & Health Officer
- MOM Approved Safety Auditor
- NEA Registered Environmental Control Officer
- Registered Fire Safety Manager
- MOM Approved Risk Consultant
- MOM Approved trainer

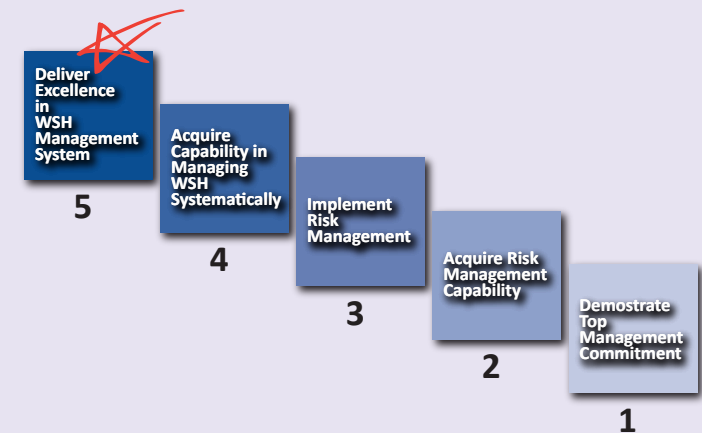
bizSAFE Consultancy Services

Why BizSAFE:

bizSAFE builds the WSH capability for your enterprise. As a bizSAFE member, you will enjoy other business privileges and advantages offered by bizSAFE partners.

BizSAFE benefits

- Create a safer and healthier work environment for employees
- Increase business competitive edge
- Gain recognition by bizSAFE partners and industry
- Receive a bizSAFE certificate for each level you attain
- Get to apply the bizSAFE logo on your name card, letterhead and other collaterals



IMPORTANT NOTICE: With effect from September 2011, the WSH Act will be extended to all workplaces. Under the act employers are required to ensure the safety and health of its employees.

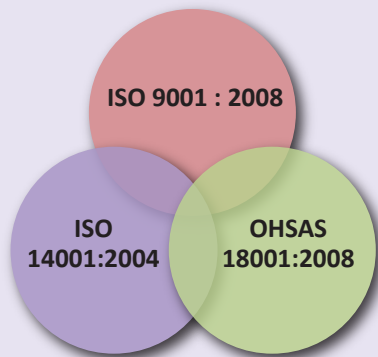
QuESH Consultants (Pte.) Ltd

Your trusted partner for Workplace
Quality, Environmental,
Safety & Health Services.....



Management System Consultancy Services OHSAS 18001 / SS 506 / ISO 14001 / ISO 9001

We work closely with each firm's principal(s) and key employees to learn about their respective internal operating systems and procedures. Through this process we are able to develop a customized approach, provide innovative solutions, make recommendations for improvement and offer guidance on implementation of each activity.



“Achieve the highly recognized international Safety and Health Management”

“Achieve the highest level of bizSAFE certification”;

“Boost up your company’s brand”...

“To achieve bizSAFE STAR, your enterprise must engage an independent third party certification company to certify that your WSHMS meets the SS506 standard or any similar international standard.”



Services We Provide

Consultancy in Management Systems

- ISO 9001 / 14001 / 22000 / 27000
- OHSAS 18001 / SS506 / SS540
- TL 9000 / TS 16949
- SA 8000
- SMS (MOM)
- HSMS (NEA)
- SMC / SMA



Consultancy in Risk Management

- Risk Management for factory notification
- Risk Management System
- Risk Assessment / Safe Work Procedures

Training

- Workshop for CEO/Top Management (bizSAFE Level 1)
- Risk Management Training – Public & In-house (bizSAFE level 2)
- Internal Auditor Training for ISO 9001 / ISO 14001 / OHSAS 18001
- QEHS Awareness Training, Customised In-house Training
- Confined Space Safety Assessor Training

Legislation Updates

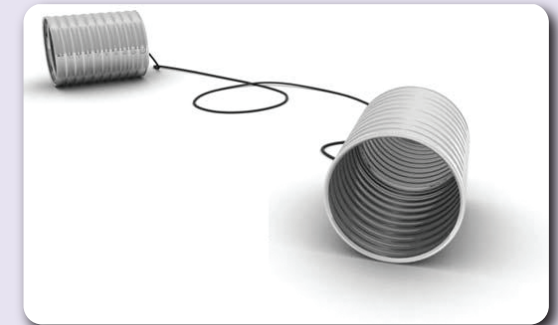
- Know the applicable legislation requirements and updates relevant to your BUSINESS.
- Be updated on the latest changes in the EHS Regulations

Audits

- 2nd Party Management Systems Internal Audits
- 3rd Party Audits on contractors
- MOM Overtime Exemption Application
- MOM Annual Safety Award
- bizSAFE Level 3 Audit

Some of Our Reputable Clients

- | | |
|------------------------------------|--------------------------------------|
| ABB Industry Pte Ltd | HDB PTC |
| Akzo Nobel Chemistry Pte Ltd | Hitachi Cable (S) Pte Ltd |
| Asia Offshore Services Pte Ltd | Hitachi Global Storage Technologies |
| Berg Propulsion Production Pte Ltd | Honeywell (Singapore) Pte Ltd |
| Builder Technology Pte Ltd | Huntsman (Singapore) Pte Ltd |
| Centeonx Pte Ltd | Hyundai Co., Ltd. |
| Changi General Hospital | Invista Singapore Fibres Pte. Ltd |
| Changi Airport Group | ISS Facilities Services |
| Chip Eng Seng Contractors Pte Ltd | Jig & Tools Engineering |
| Chye Joo Construction Pte Ltd | Kay Lim Construction Pte Ltd |
| Cimelia Resource Recovery Pte Ltd | Keppel FMO Pte Ltd |
| CKR Contract Services | Keppel Sea Scan Pte Ltd |
| CKR Engineering Services Pte Ltd | Koon Engineering Pte Ltd |
| Convergence Consulting (US) | Kansai Paint |
| CYS Packaging | LTA Kim Chuan Depot |
| Dragages Singapore Pte Ltd | Lua Hiap Services |
| Ecomaster International Pte Ltd | MFE International Pte Ltd |
| e-Hub Metals Pte Ltd | Mitsubishi Chemical Infonics Pte Ltd |
| ESE Industries Pte Ltd | NEA - Tuas South IP |
| Evershine Services Pte Ltd | PMPS Liner Pte Ltd |
| Façade Holdings Pte Ltd | Porite Singapore Pte Ltd |
| Lum Chang Contractors Pte Ltd | PSB Academy Pte Ltd |



Contact Us

Contact us now for a no obligation discussion and quotation !

Office

50 Bukit Batok Street 23,
#07-10 Midview Building,
Singapore 659578

Phone: (65) 6316 6602

Mobile: (65) 93622678

Facsimile: (65) 6316 6927

General Email: diana@quesh.com.sg

Website: www.QuESH.com.sg